

HEAVY DUTY ICE-COOLED TABLES WITH ENCLOSED BASE



Enclosed Base
HD CPU-3-BS Shown
with Optional TA-255P Casters

Item #: _____ Qty #: _____
Model #: _____
Project #: _____

FEATURES:

Heavy duty construction
All welded 300 series stainless steel
Fiberglass insulation
Uses standard 12" x 20" pans, and smaller pans with the use of adapter bars (NOT INCLUDED)
Stainless steel shelf with removable 3/8" thick poly cutting board - Ships K.D.

MATERIAL:

CABINET BASE: 18 gauge #304 stainless steel
LINER: 8" deep, 18 gauge #302 stainless steel welded
CUTTING BOARD: White Thermoplastic
INSULATION: Fiberglass
LEGS: 16 gauge stainless steel with full adjustable stainless steel bullet foot

Model	Length (L)	Width*	O.A. Inside Well Dim (A x B)	Wt (lbs.)	Cu. Ft.
HDCPU-2-BS	31.867"	36.25"	27.476" x 20.16"	117 lbs.	27
HDCPU-3-BS	47.179"	36.25"	42.78" x 20.16"	145 lbs.	39
HDCPU-4-BS	62.492"	28.25"	58.1" x 20.16"	205 lbs.	58
HDCPU-5-BS	77.80"	36.25"	73.4135" x 20.16"	250 lbs.	69
HDCPU-6-BS	93.11"	36.25"	88.825" x 20.16"	295 lbs.	81

***Width Includes 8" Cutting Board**

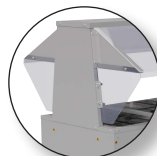
Food Table Shelving & Accessories

Visit our website for additional accessories



**Double Sided
Self-Serve Buffet Shelf**
with Built-In Food Shield

Model	Length	Approx Wt.	Cu. Ft.
TBS-2	31-13/16"	34 lbs.	2
TBS-3	47-1/8"	42 lbs.	3
TBS-4	62-7/16"	47 lbs.	4
TBS-5	77-3/4"	55 lbs.	4
TBS-6	93-1/8"	63 lbs.	4



**Acrylic Side Panels
for Buffet Shelf**

Add side panels to meet additional NSF requirements (2 panels per end)

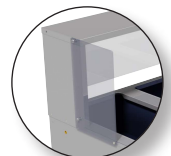
**TBP-1 One End
TBP-2 Two Ends**

Field Installation Available



**Single Sided
Cafeteria Shelf**
with Built-In Food Shield

Model	Length	Approx Wt.	Cu. Ft.
TSS-2	31-13/16"	18 lbs.	2
TSS-3	47-1/8"	23 lbs.	3
TSS-4	62-7/16"	30 lbs.	4
TSS-5	77-3/4"	35 lbs.	4
TBS-6	93-1/8"	41 lbs.	4



**Acrylic Side Panel
for Serving Shelf**

Add side panels to meet additional NSF requirements. (1 panel per end)

**TSP-1 One end
TSP-2 Two Ends**

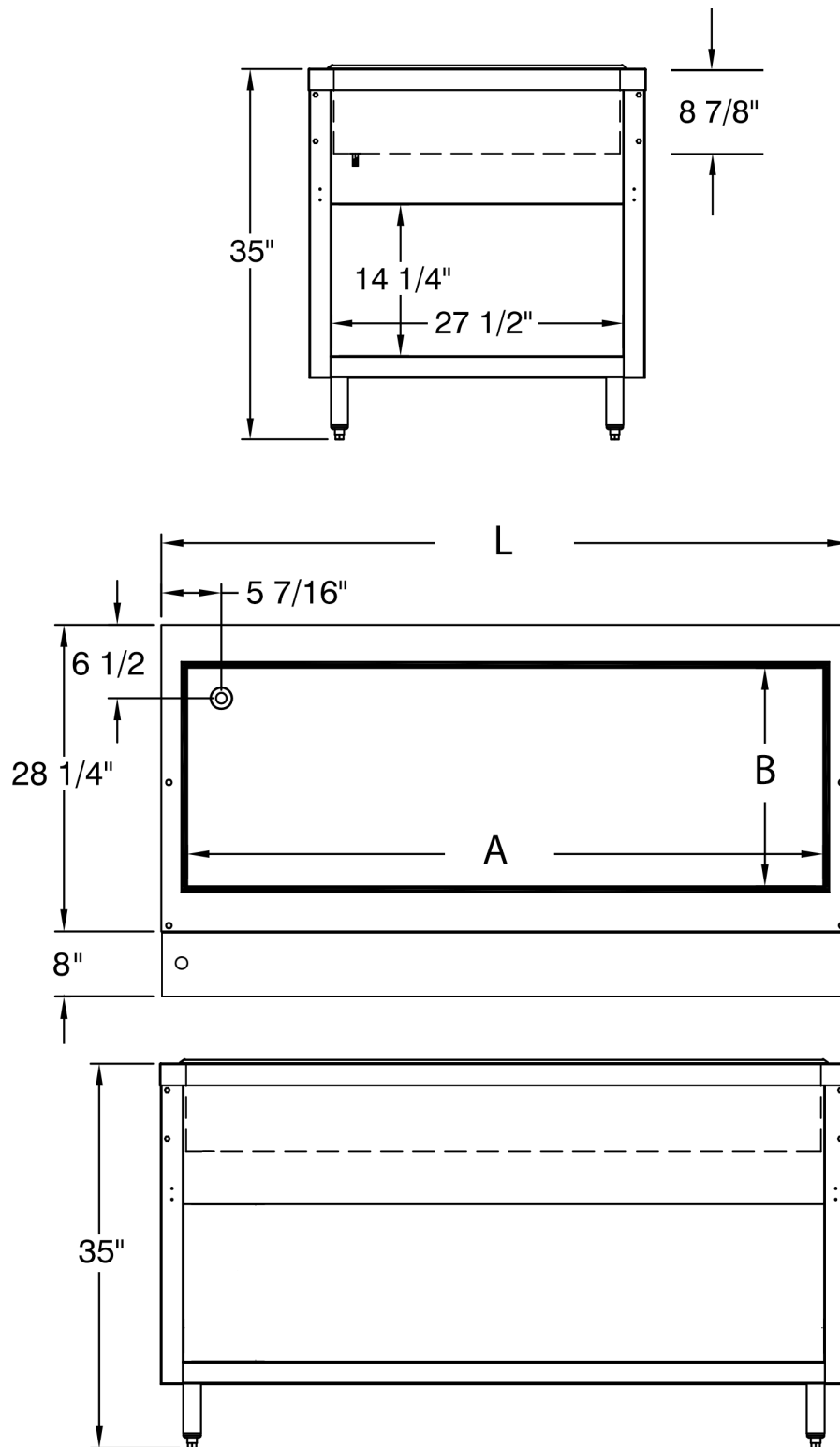
Field Installation Available

DIMENSIONS and SPECIFICATIONS

TOL $\pm .125"$

ALL DIMENSIONS ARE TYPICAL

SIDE VIEW



REF-V

200 Heartland Boulevard, Edgewood, NY 11717-8380

ADVANCE TABCO is constantly engaged in a program of improving our products. Therefore, we reserve the right to change specifications without prior notice.

© ADVANCE TABCO, JULY 2017