

HEAVY DUTY ICE-COOLED TABLES WITH ENCLOSED BASE AND SLIDING DOORS



HDCPU-3-DR Shown

Item #: _____ Qty #: _____
Model #: _____
Project #: _____

Model	Length (L)	Width*	O.A. Inside Well Dim (A x B)	Wt (lbs.)	Cu. Ft.
HDCPU-2-DR	31.8125"	36.25"	24.125" x 19.25"	127 lbs.	27
HDCPU-3-DR	47.125"	36.25"	39.50" x 19.25"	155 lbs.	39
HDCPU-4-DR	62.50"	36.25"	54.75" x 19.25"	215 lbs.	58
HDCPU-5-DR	77.75"	36.25"	70" x 19.25"	264 lbs.	69
HDCPU-6-DR	93.125"	36.25"	85.375" x 19.25"	309 lbs.	81

***Width Includes 8" Cutting Board**

FEATURES:

Heavy duty construction
All welded 300 series stainless steel
Fiberglass insulation
Two stainless steel sliding doors
Uses standard 12" x 20" pans, and smaller pans with the use of adapter bars (NOT INCLUDED)
Stainless steel shelf with removable 3/8" thick poly cutting board - Ships K.D.

MATERIAL:

CABINET BASE: 18 gauge #304 stainless steel
LINER: 8" deep, 18 gauge #302 stainless steel welded
CUTTING BOARD: White Thermoplastic
INSULATION: Fiberglass
LEGS: 16 gauge stainless steel with full adjustable stainless steel bullet foot

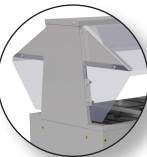
Food Table Shelving & Accessories

Visit our website for additional accessories



**Double Sided
Self-Serve Buffet Shelf
with Built-In Food Shield**

Model	Length	Approx Wt.	Cu. Ft.
TBS-2	31-13/16"	34 lbs.	2
TBS-3	47-1/8"	42 lbs.	3
TBS-4	62-7/16"	47 lbs.	4
TBS-5	77-3/4"	55 lbs.	4
TBS-6	93-1/8"	63 lbs.	4

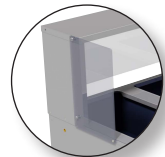


**Acrylic Side Panels
for Buffet Shelf**
Add side panels to meet additional NSF requirements (2 panels per end)
TBP-1 One End
TBP-2 Two Ends
Field Installation Available



**Single Sided
Cafeteria Shelf
with Built-In Food Shield**

Model	Length	Approx Wt.	Cu. Ft.
TSS-2	31-13/16"	18 lbs.	2
TSS-3	47-1/8"	23 lbs.	3
TSS-4	62-7/16"	30 lbs.	4
TSS-5	77-3/4"	35 lbs.	4
TBS-6	93-1/8"	41 lbs.	4



**Acrylic Side Panel
for Serving Shelf**
Add side panels to meet additional NSF requirements. (1 panel per end)
TSP-1 One end
TSP-2 Two Ends
Field Installation Available

DIMENSIONS and SPECIFICATIONS

TOL $\pm .125"$

ALL DIMENSIONS ARE TYPICAL

