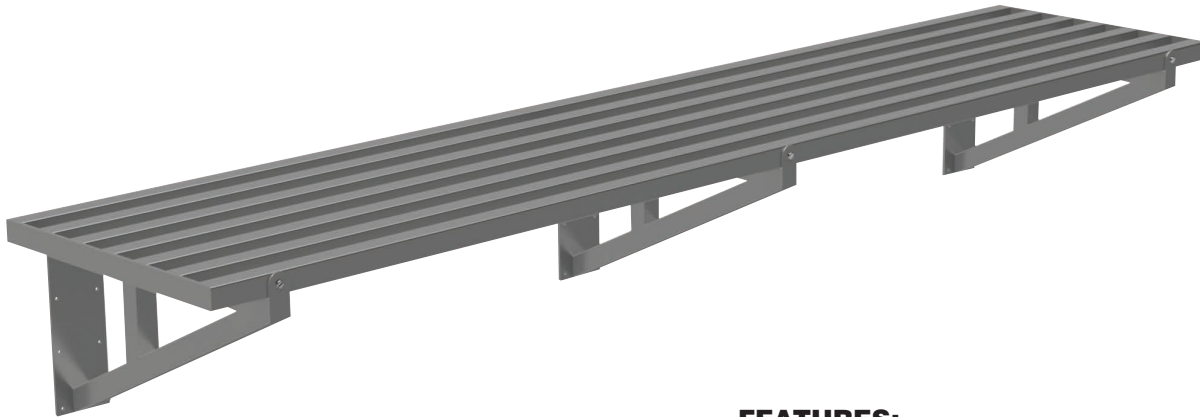


STAINLESS STEEL

HEAVY DUTY SLOTTED COOK LINE WALL SHELF



Item #: _____ Qty #: _____
Model #: _____
Project #: _____



FEATURES:

21" Wide
1 1/2" Square Tubes
1 3/4" Spacing
Tubular Support Brackets
(Shipped Loose To Suit Wall Stud Location)

MATERIAL:

SHELF: 18 Gauge, 304 Stainless Steel Tubing

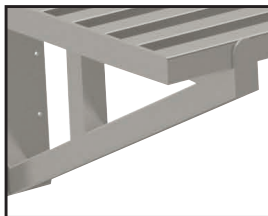
BRACKET: 14 Gauge, 304 Stainless Steel

CONSTRUCTION:

Stainless Steel Plate Mounting Bracket
Square Tubes
All welded stainless steel units are blended to a satin finish

NOTE: Recommend Field Welding Brackets To Underside Of Cook Line Shelf

WELDED BRACKET OPTION



TA-26-21

Factory Welded Shelf Brackets
(Print Required)

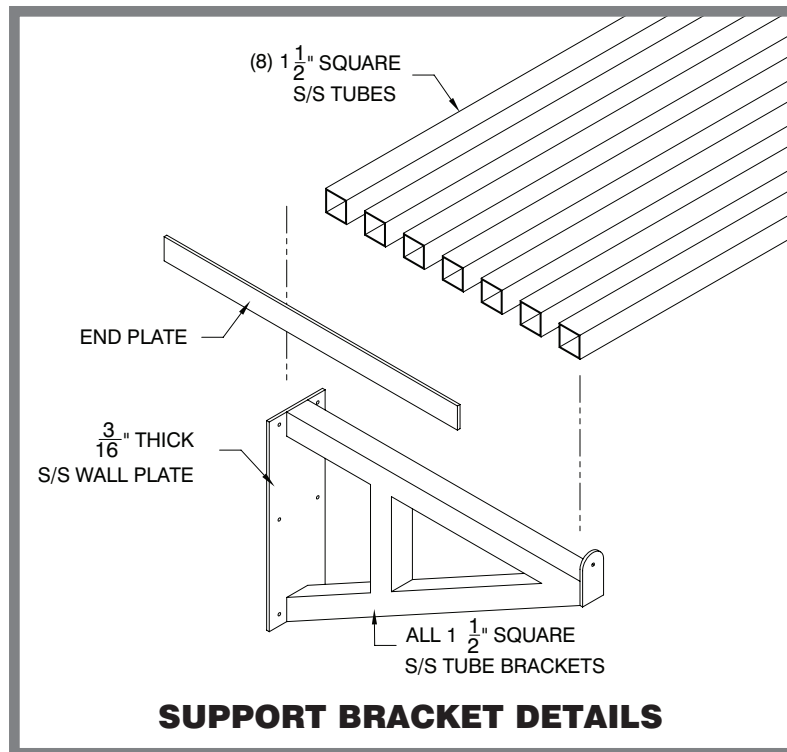
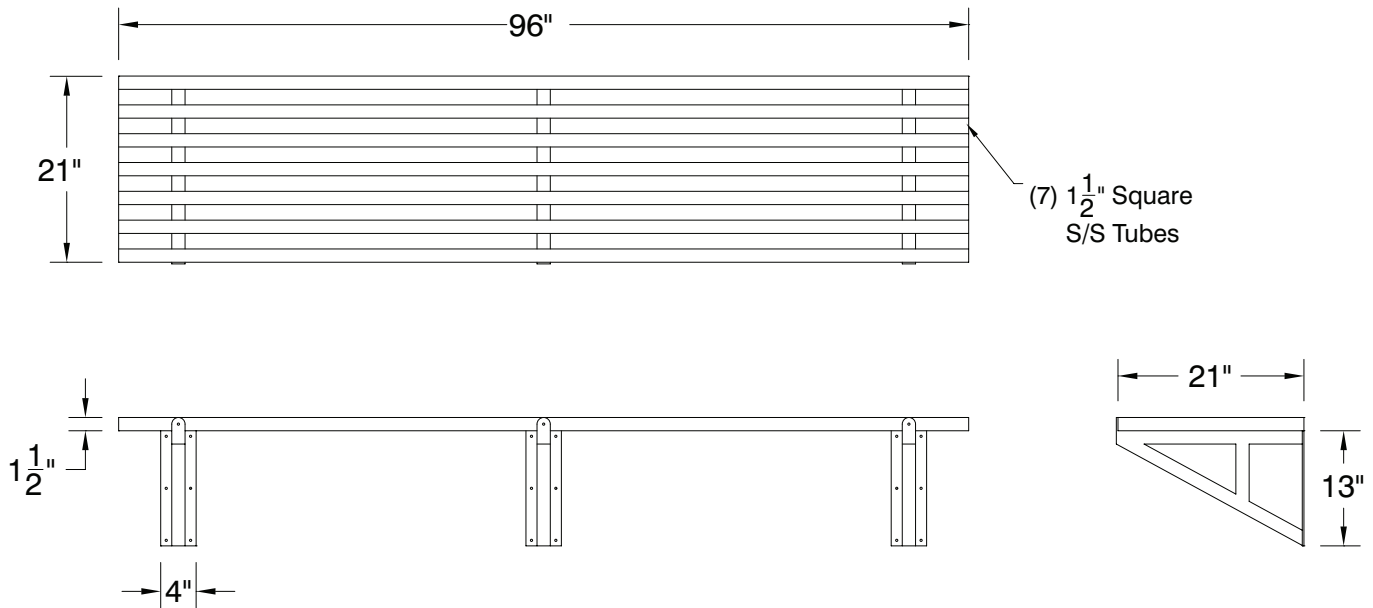
Length	Model #	# of Brackets	Approx. Wt.	Approx. Cubes
48"	DT21-4	2	90 lbs.	6
72"	DT21-6	3	105 lbs.	8
96"	DT21-8	3	145 lbs.	10
120"	DT21-10	4	190 lbs.	13
144"	DT21-12	4	210 lbs.	15

DETAILS and SPECIFICATIONS

TOL $\pm .500"$

ALL DIMENSIONS ARE TYPICAL

HEAVY DUTY SLOTTED COOK LINE WALL SHELF



REF-L

200 Heartland Boulevard, Edgewood, NY 11717-8380

ADVANCE TABCO is constantly engaged in a program of improving our products. Therefore, we reserve the right to change specifications without prior notice.

© ADVANCE TABCO, APRIL 2018